

KAUFMAN  BROAD

Sunrise over

PEARL BEACH

IN VILLENEUVE-LOUBET



Every morning,

the gracious radiance of the sea gently lulls the nascent day.
If paradise on Earth is to see only the Mediterranean Sea all the way to the horizon,
then all the happiness in the world is to enjoy every day in Pearl Beach,
Kaufman & Broad's latest project on the Côte d'Azur in France.
Every waking hour here is a source of wonder, whether you're walking along the water's
edge or admiring the landscaped garden filled with remarkable scents. Mirroring the
horizon that stretches before it, this building delicately laid on the beach in Villeneuve-
Loubet, is an invitation to travel and adopt a completely new lifestyle. This exceptional
location with its showcase apartments unfurls its boundless elegance along the inviting
shore, giving you a whole new idea of comfort.
Every minute of your life will become a succession of simple yet unforgettable pleasures.

And this is what luxury is all about.

9.58 am

Another day of beautiful weather,
and your first swim of the day
at Pearl Beach.





Seen from the sea, Pearl Beach's silhouette casts its benevolent shadow along the promenade.

Your very own uninterrupted view...

THE SEA, WHERE FINE WEATHER REIGNS SUPREME

Pearl Beach's exceptional location, with its private access to the beach, deserves far more than merely contemporary architecture. Its refined and sober design highlights the horizontal lines of its three levels that stretch along the beach facing the sea. Its intentionally slanted facade draws on a marine theme, a geometrical approach that creates intimate volumes, and allows apartments on the top floor to have their own private solariums. The contrast between the white of the balconies and the grey tones of the walls lend elegance to the building.

On the top floor, a beautiful infinity pool complete with ceramic tiles and a wooden deck overlooks the sea.

11.47 am

The infinity pool and its solarium extend their invitation to relax...
Every instant brings a new wave of wellbeing to Pearl Beach.



An infinity of water all the way to the horizon. Here you will find beauty, serenity, and a place to call home.



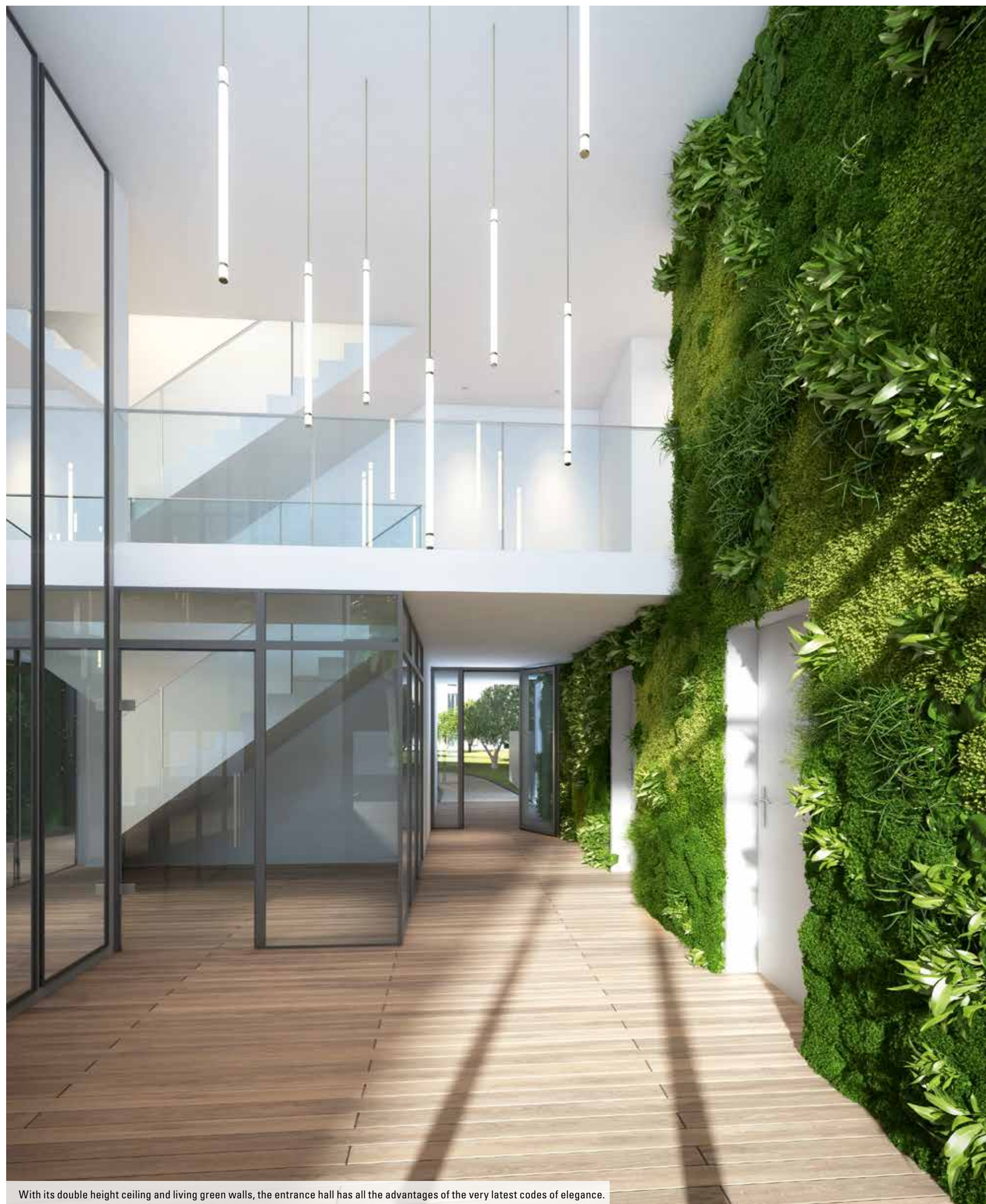
Boulevard des Italiens. Perfectly-studied volumes lend harmony to the ensemble.

A new-found agility...

TOWN LIFE, WHERE ENERGY REIGNS SUPREME

Pearl Beach is a veritable haven of peace and quiet. But although it faces the Mediterranean Sea and opens out onto a wooded park, the opposite side of the building overlooks the town. Its contemporary style and white surfaces are perfectly in keeping with the more urban environment, adding brightness and a new type of aesthetics, and its uninterrupted rows of balconies have the timeless charm and style of a cruise liner poised on the edge of the town.

All the residents can enjoy the infinity pool, solarium, wooded park and direct access to the beach.



With its double height ceiling and living green walls, the entrance hall has all the advantages of the very latest codes of elegance.

Green Power...

A VERTICAL GARDEN IN THE ENTRANCE HALL

When an entrance hall is intended as a centrepiece, its design and finishing touches must be up to standard. Ours has been designed by a distinguished architect.



“

When approached from the seaside route, the double height ceiling and semi-open green space spontaneously takes the eye to the heart of the project. This green sanctuary naturally prolongs the south-facing garden close by. The area has been enhanced by adding new essences in amongst existing trees, to create a beautiful backdrop where residence inhabitants can enjoy a stroll.

”

Jean-Philippe Cabane
ABC Architectes



Pearl Beach standards have also been upheld by safeguarding privacy and enhancing security. The entrance door is operated by a badge, digital lock and videophone, and automatic lighting is controlled by a presence detector and timer. And last but not least, the concierge service* will guarantee your comfort and peace of mind at all times.

* Service currently being defined.



Step into the lounge, where fine proportions and large floor-to-ceiling windows open out onto beautiful terraces.

Wellbeing in all things...

THE GREATEST INVITATION TO CONVIVIALITY

At Pearl Beach you get to enjoy a privileged living environment, where home comforts are rivalled only by the quality of the services. Space takes on a new dimension for the purpose of providing indoor architecture that adapts to individual lifestyles. With its «twinable» apartments which include studios and penthouses, Pearl Beach offers a wide range of possibilities to meet the requirements of personal life projects. Ideally laid-out volumes, a variety of orientations, plenty of windows and glass doors, wide and airy terraces and private solariums – here, everything is done to broaden your horizons.

Indoor fixtures and fittings meet the most exacting standards, to offer long-lasting everyday comfort.



The master bedroom, where you'll be delighted to unwind and relax.

An invitation to dream...

YOUR NIGHTS WILL BE AS BEAUTIFUL AS YOUR DAYS

In all apartment, the night-time areas are bright and airy. The ideal volumes of bedrooms will contribute to your peace of mind and relaxation. Some apartments have their own master suite and adjoining bathroom, for greater intimacy.

The quality of amenities is combined with a home automation pac*. This pack is used to remotely control rolling shutters and lighting via a smartphone** or tablet**.

* In a selection of apartments.

** Devices are not supplied.

2.32 pm

In the landscaped enclosure,
nature invites you to relax in quiet
surroundings at Pearl Beach.





The landscaped enclosure. Lush greenery suffused with the scents of mimosa and orange blossom.



Bird's eye view. A rare site indeed, located between the Boulevard des Italiens and the Mediterranean Sea.

A breath of inspiration...

NATURE, WHERE TRANQUILLITY REIGNS SUPREME

Because luxury always generates incomparable vitality, Pearl Beach's two buildings are built around a landscaped enclosure designed and laid out like a park. This cool, quiet and peaceful shelter highlights the marine inspiration of the architecture and has been designed to form a tableau of tall trees and low bushes with a path for easy access throughout, and a shortcut to the beach.

FOR A DELIGHTFUL BREAK

Here, the sea and greenery form a luxuriously peaceful haven designed to «resonate» with surrounding buildings while preserving the views that lead the eye inland or out to sea.

The construction meets the requirements of environmental standards RT2012 and NF Habitat.*

* Certificates issued on completion of the residence.



6.21 pm

Within just a few steps of all the services
on offer in Villeneuve-Loubet and the lively hustle
and bustle of the French Riviera...
Pearl Beach is all of this and more.



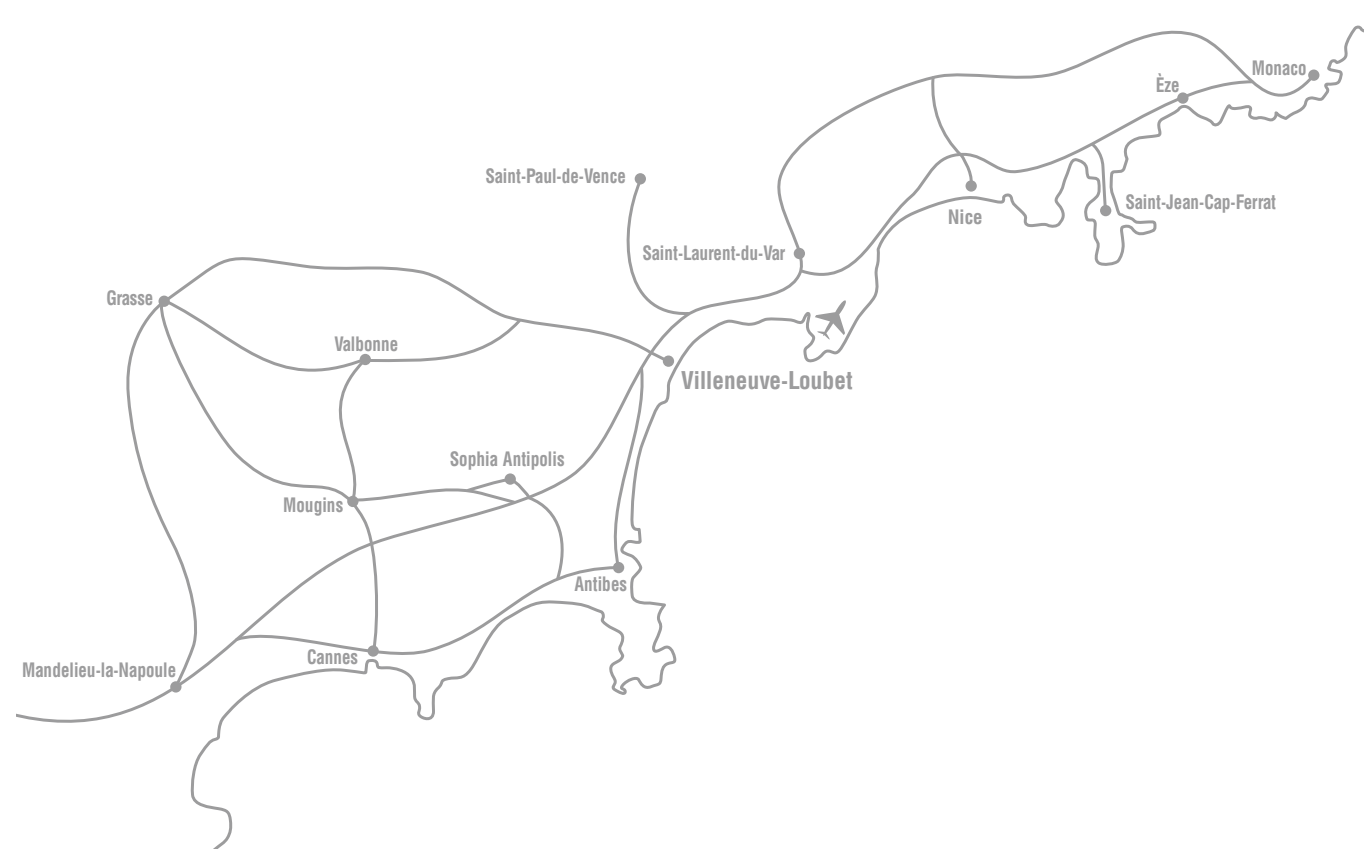
The port in Villeneuve-Loubet.



The Promenade des Anglais in Nice.



The Fort Carré and the Alps in the background, Antibes.



*The ideal location
between Nice and Antibes.*

A BEAUTIFUL WAY TO ENJOY THE FRENCH RIVIERA

With its yachts, luxury stores and heavenly beaches, the French Riviera now has its loveliest gateway in the form of Pearl Beach on the beach in Villeneuve-Loubet. This authentic seaside town is ideal for those who want to make the most of a region where life is sweet at any time of the year. In fact lovers of art, history and sporting events will be spoilt for choice!

Just 15 minutes* from Nice's international airport, 10 minutes* from Antibes, less than 1 hour from Italy and 90 km* from the skiing resort Isola 2 000.

* Source Google Maps.

10.30 pm

*The beauty of the sunset over the bay, seen from the terrace...
Every evening comes with the promise of a new
and wonderful day at Pearl Beach.*

PEARL BEACH

305 boulevard des Italiens – Villeneuve-Loubet

0 800 544 000

Free services
and calls

kaufmanbroad.fr